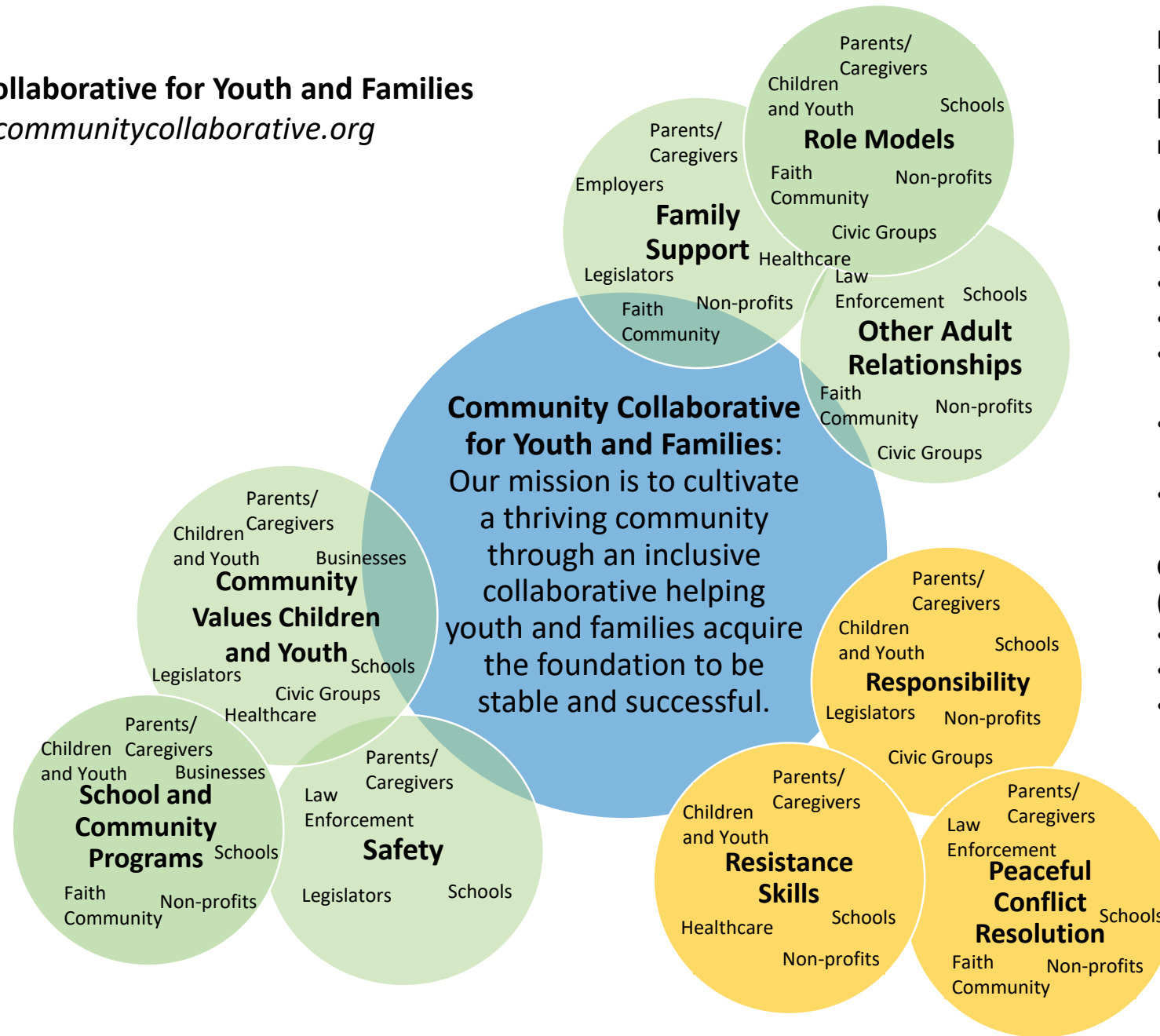




The Common Plan

The Community Collaborative for Youth and Families has identified nine (9) assets from The Search Institute to use as indicators to achieve our mission and reach targeted outcomes. This is a visual representation of our Common Plan. The intent of our Common Plan is to provide a framework for individuals and organizations to collectively define, communicate, and document youth and family development activities within Planning District 16.



Developmental Assets
 Help young people grow up healthy, caring, and responsible.

Community (External):

- Family Support
- Role Models
- Other Adult Relationships
- Community Values Children and Youth
- School and Community Programs
- Safety

Children and Youth (Internal):

- Responsibility
- Resistance Skills
- Peaceful Conflict Resolution